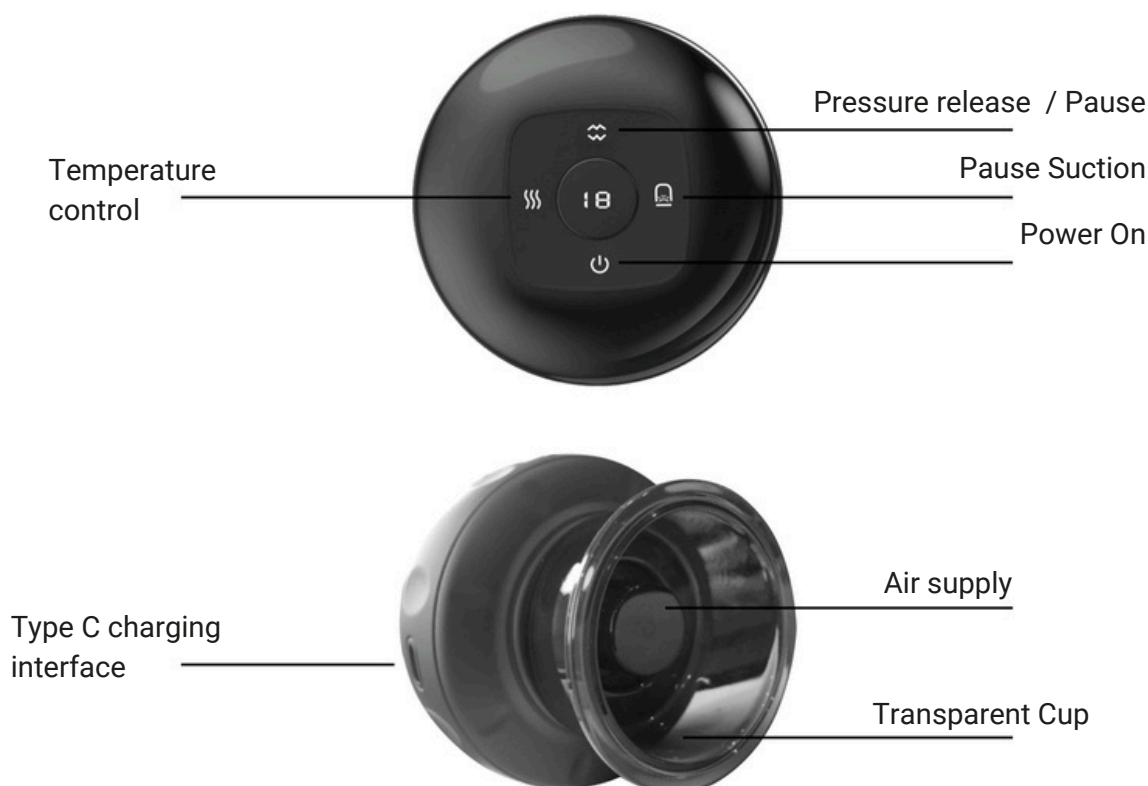
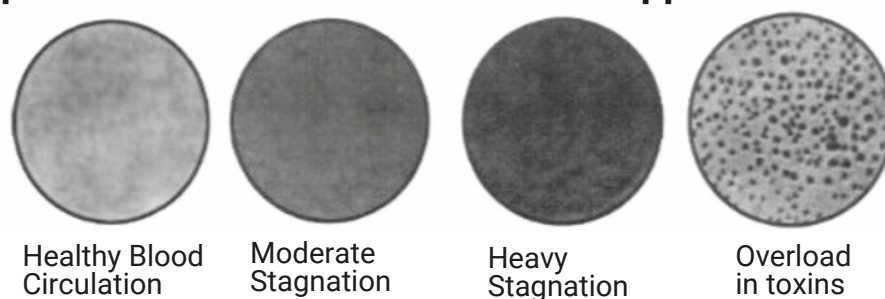


Product introduction

Cupping helps you to get instant relief from all types of body pain. Mainly against back and spine pain, it also relaxes stiff muscles and cervical spine, stimulates blood circulation, relieves the body of cellulite. It is also reported that cupping has a beneficial effect on detoxification of the body and has a positive effect on migraine and headaches.



Example of how the skin looks after the application of cupping



The principle of operation of the product

This device introduces a new technology of cupping that is safer, more efficient and easier to use. The device sucks in air and due to the vacuum created, different volumes of skin and subcutaneous tissue are sucked into the device. This underfloor draws the pollutants to the surface of the body and eliminates them. The cupping opens the skin pores and thus allows the elimination of pollutants.

Warning before first use:

- The device uses the power of vacuum to stimulate the skin. This mechanical irritation of the skin produces bruising and discoloration of the skin. Microcirculation improves, red blood cells increase. This is the normal and natural state of the cupping technique.

1. Read the safety precautions carefully when using this product
2. It is recommended to clean and moisturize the skin with a damp towel or spray to improve the feeling of use.
3. Tighten and install the transparent tank (wipe the device with a damp cloth before and after use).
4. Check that the instrument is complete and normal.

Safe to use

To avoid the risk of malfunction, injury, fire and damage to equipment or property, please observe the following safety precautions.

1. This product has a built-in battery. Do not throw this product into a fire or expose it to the sun, otherwise it will potentially cause damage
2. Do not use this product while charging.
3. Do not modify or adjust this product yourself.
4. Do not place the charging equipment and the device in a humid environment or in water.
5. Do not place this product where children and infants can reach.
6. Avoid dropping or bumping/shocking the product.
7. Do not use this product when bathing or swimming in hot springs.
8. Observe contraindications for use of the device. If you are unsure of your medical condition, consult

Effects of cupping

Relaxes stiff muscles

Destroys muscle spasms

Relaxes the lymphatic system

Eliminates cellulite

Eliminates muscle, joint, neck, thoracic and lumbar spine pain

Detoxifies the body

Eliminates headaches and migraines

Accelerates metabolism in the skin

Improves the activity of sweat and sebaceous glands

increases the supply of nutrients to the tissues

Promotes skin regeneration and increases its resistance to various pollutants

Under pressure, blood and lymph circulation is stimulated Increased secretion of synovial fluid has been observed in joints

Stimulation of internal organs increases peristalsis, improves digestion and nutrient absorption

Stimulation of nerve endings. The tissue is warmed and blooded and stiff muscles and trigger points are relaxed, resulting in the disappearance of myofascial pain

The immune system is stimulated In the neck area we can positively influence headaches, Delay the onset of migraine In the thoracic spine area we can positively affect dry cough, bronchitis, asthma, fever, trigger colds In the lumbar area we can positively affect pain

Temperature control

1. The default temperature of 3 gears will start, the red light at the bottom will turn on. The temperature can be adjust the temperature by a short press.
2. When the temperature of a certain gear, the color of the temperature indicator starts to change to a color light and flashes. The higher the temperature, the faster the speed of the color lamp changing.
3. When the temperature reaches the highest gear, briefly press again to switch off the heating function (stage 0) and the temperature indicator will go out. The red indicator light at the bottom goes out.
4. When the temperature reaches the highest gear, briefly press again to switch off the heating function (stage 0) and the temperature indicator will go out. The red indicator light at the bottom goes out.

Pressure release / pause

If you want to stop during the cupping process, briefly press the button to pause cupping. The tank adsorption and pressure release functions can easily lift the tank and go into standby.

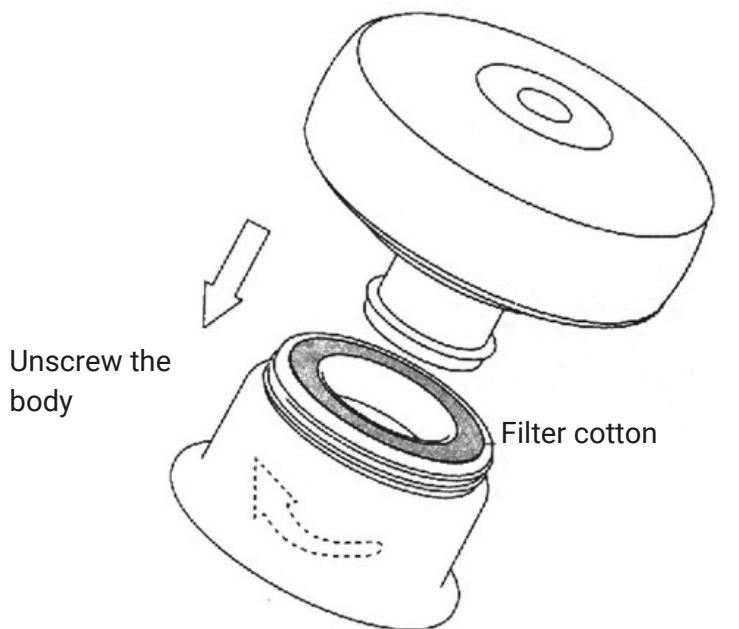
- Removing the device is done by running the thumb under the device, this draws air back in and the device ...and the device is released from the skin.

Note: 1

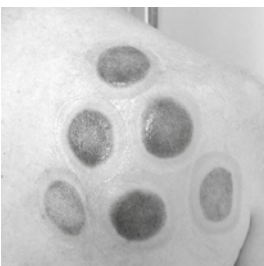
When using this machine with liquid peripheral products such as essential oil, please make sure that you have essential oil on your skin. After the skin surface is evenly covered and there is no obvious liquid, adsorb the machine to the desired position.

Note: 2

The machine has a filtration device that can filter out most particles or liquid impurities to protect the inner hull and preserve the life of the product. Use it according to your personal needs. Periodically check and replace the filter wool regularly.



After replacing the attached filter cotton, install the body.



Bruising caused by cupping therapy

Frequently Asked Questions

1. Is it normal for my skin color to change after application?

Yes, your skin will change colour after the device is applied. The discoloration of the skin is most often manifested in the following colors: red, purple, green, gray.

2. Does it hurt?

If the application hurts, set the vacuum strength to the smallest level 1. If it still hurts to move the device, do not continue to move the device and only apply the device to specific areas and let the pressure point.

3. Is it normal for the product to suddenly stop working during the cupping?

The product is set for a maximum run time of 20 minutes. After 20 minutes it automatically stops operation. It is not recommended to use the device for longer than 20 minutes.

Parameter

| | |
|--------------------|---------------|
| Battery life Input | Around 90 |
| parameters | minutes DC 5V |
| Suction power | 2A -60~0kPa |
| Nominal power | 5W |